

# UDYAMA 58B Printer

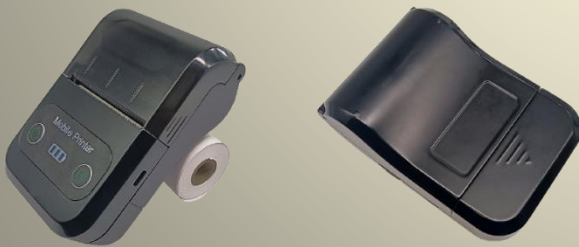


Robust Design



## KEY FEATURES

- ✓ Portable suited for outdoor usage
- ✓ Black mark paper location sensor
- ✓ Low battery indicator(7.4V,2600mAh)
- ✓ Equipped with lithium battery for 8 hours continuous work
- ✓ Various interface and capabilities
- ✓ Bluetooth high communication speed
- ✓ Easy paper loading
- ✓ High printing speed , up to 90mm/s



## APPLICATIONS -

- Medical Equipment
- Mobile POS/Retail
- Hospitality
- Packing citation
- Deliveries
- Utility billing/Meter reading
- On board Transportation
- Field reports/Installation
- Warehouse/ logistics

**Specially designed for all type of billing counters**

**RETAIL**

**MALLS**

**FOOD OUTLET**

**GROCERY**

**RESTAURANT**

# TECHNICAL SPECIFICATIONS

Dimension	119*81*47mm (W*D*H)
Print method	Line thermal printer
Paper width	58mm
print width	48mm
Weight ( g)	199g
Max diameter of paper roll	40mm
Dot per lie	384 dots/line
Print speed	90mm/s
Life cycle time	50km(printing density under 12.5%)/100 million pulses
text and graphic Support	English, figure, symbol, Chinese, graph, curve, icon pre-stored, barcode (CODE39EAN13EAN8 CODABARCODE128CODE93ITF)
Dot pitch (resolution)	203DPI/8 dots/mm
interface	TYPE C USB bluetooth support android and IOS
Power	2600mAh 7.4V rechargeable Lithium battery
Recharge adapter	Stand by recharging / AC adapter
Self-check commands	Without paper /low power/ cover open
Black mark test	Supported
Paper cut	By hands
Operate setting	Temperature:-10°C~50°C; Humidity:20%~85%
Recharge Setting	Temperature:5°C~40°C; Humidity:20%~85%
Storage Setting	Temperature:-20°C~70°C; Humidity:5%~95%
Standard accessories	Long-term preservable paper, AC adapter, li-ion battery
Optional accessories	Serial interface cable / leather coat